

Expertly designed *for expert taste.*

GRUNDIG

It starts at home



Brochure

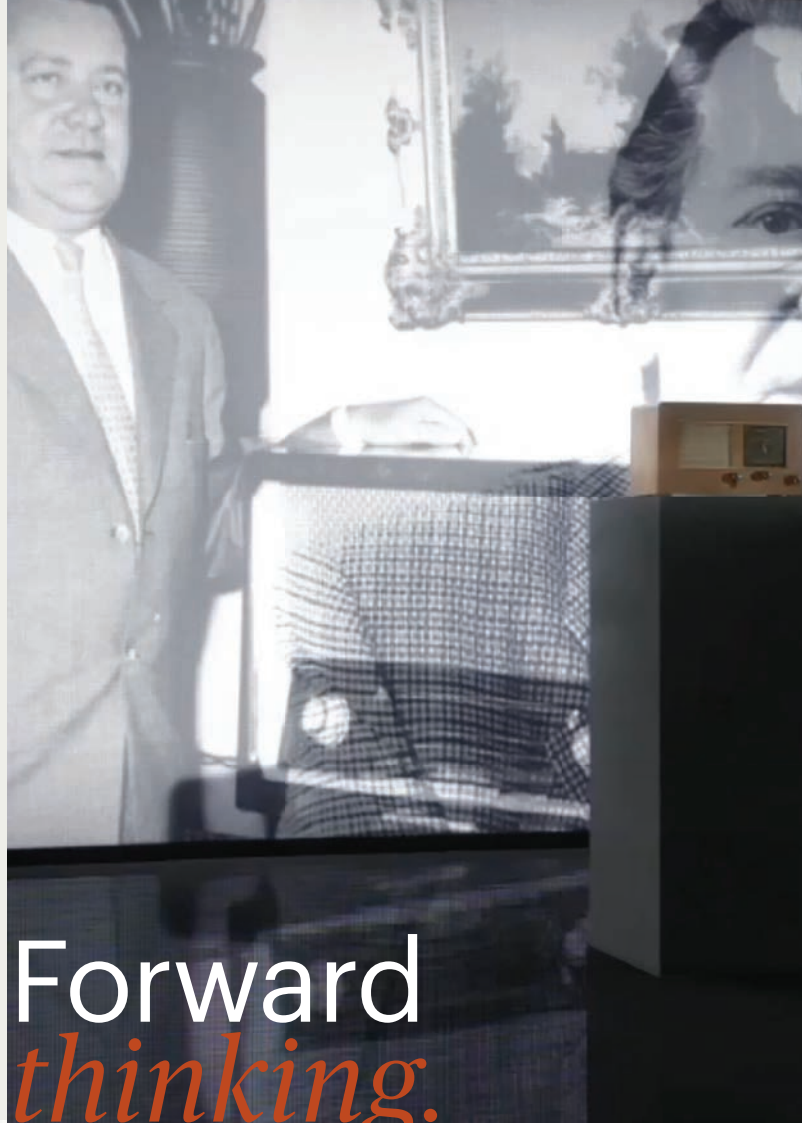
About Us



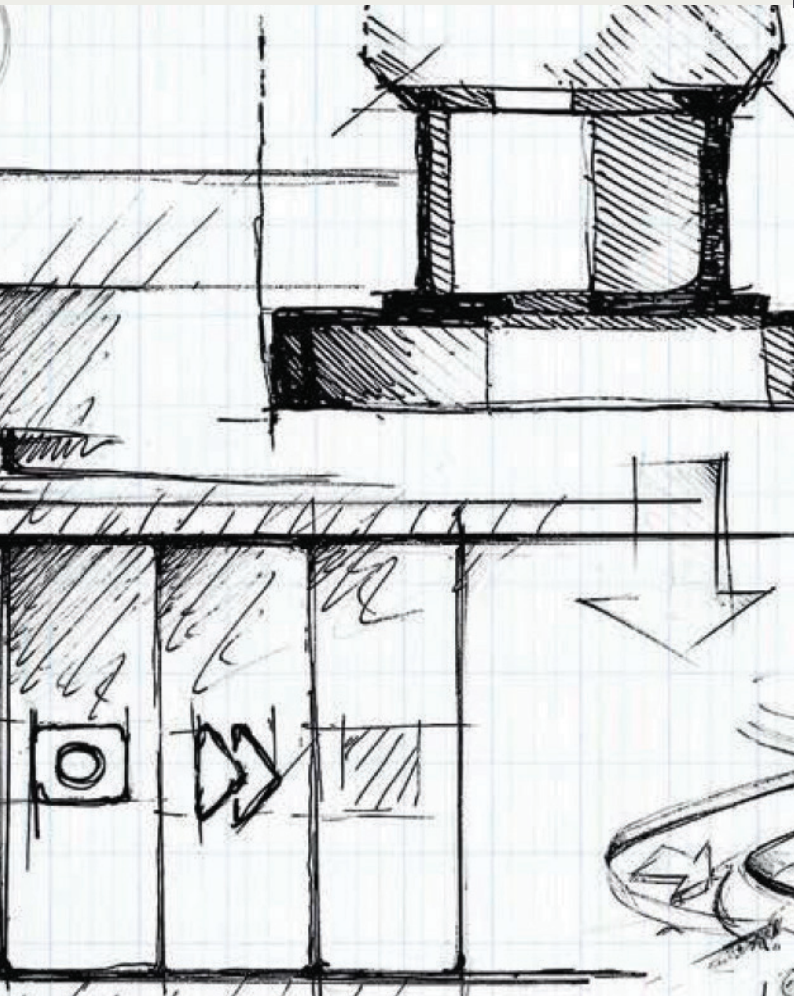
It started with
*a passion for
music.*

Over 75 years ago Max Grundig, an avid fan of music, began to translate his love of the invisible craft into the production and selling of radios.

With its meticulous German design, GRUNDIG brought to life the elusive art of music and its elements of innovation, creativity and discipline. After all, what are radios if not homes for music?



Forward
thinking.



Our designs continue to draw inspiration from music and the master craftsmanship, dedication, and beauty that it encompasses.

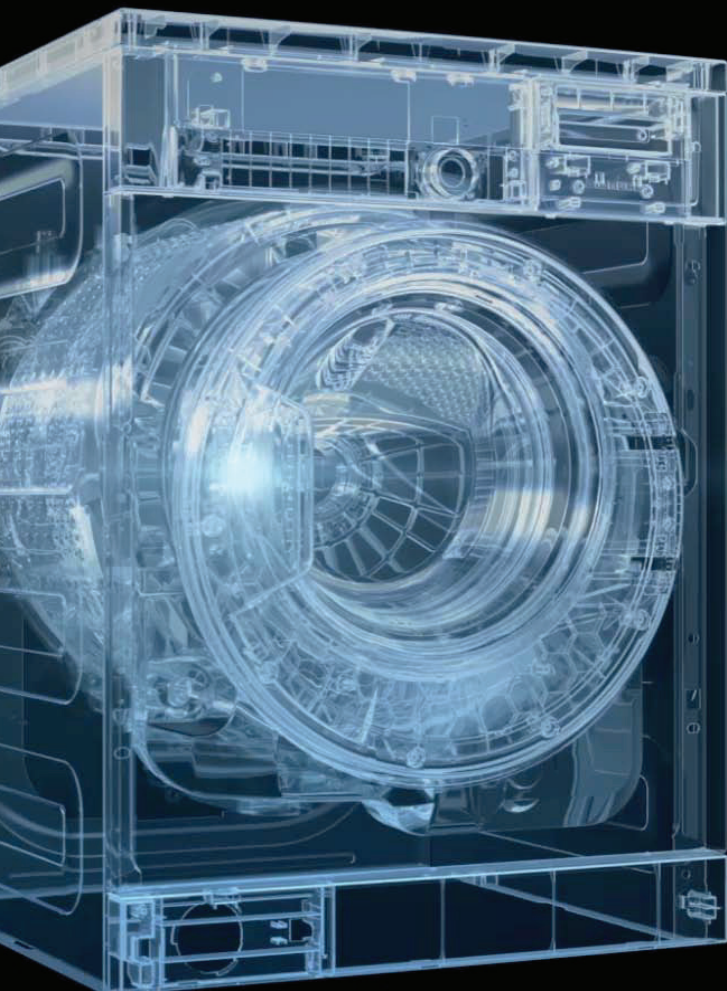
For many South Africans their first GRUNDIG experiences can be traced back to Mercedes-Benz radios and the memories they were so dearly part of.

Ever since those early beginnings, the team at GRUNDIG have been unwavering in our commitment to creating quality German products that exemplify the perfect harmony between appliance and modern living.

Precision.

Yesterday's greatest, *tomorrow's best.*

In 2007, GRUNDIG Intermedia GmbH was acquired by Arçelik, one of Europe's largest white goods manufacturers and part of the Fortune 200 conglomerate, Koç Holding. This partnership between GRUNDIG and Arçelik, has resulted in GRUNDIG becoming one of the world's leading producers of entertainment electronics, small electrical appliances and major home appliances. Over the years GRUNDIG has become Europe's only brand for a full range of consumer electronics.



Our vision is to go even bigger and mindfully synthesise the greatest of yesterday with the best of tomorrow. When mapping out our goals, sustainability has become the key focus area of the brand. We are now a market leader in energy efficiency without compromising on quality or functionality. Our eco-conscious status leads us to believe that there is a future to be taken care of. We see it as our responsibility to develop a reliable range of eco-savvy, intelligent, sustainable appliances that help make the world and your home a better place.

Our Brand Strategy

Purposeful brand with unique *sustainability positioning*

We believe fundamental values such as care, generosity and respect make us good human beings. More importantly, these values originate sustainability that will result in a better future.

We, as Grundig, share these values. And, we deeply understand that those values are first shared and learnt at home. And it's what we learn inside our homes that shape the world outside them.

This is why we committed to it starts at home.



We are Grundig.
We're not just thinking about how to make better devices.

We're thinking about how to become better human beings.

We are the only home appliance brand that bases everything we do on fundamental values such as care, generosity and respect.

Our product truth is based on
no compromise idea

We want to lead by example with our products that are all built with values without compromise on sustainability, quality and aesthetics.

Each is as important as the next and helps us continue to create thoughtful home appliances.



AESTHETICS

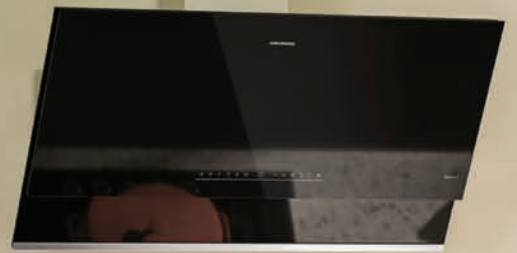
- Combining timeless modern heritage with current values and standards
- Derived from pure geometrical forms with minimum visual noise

QUALITY

- Cutting edge technologies
- Consistency & simplicity in UI
- Re-defined connectivity features

SUSTAINABILITY

- Energy and water efficiency
- Parts made from recycled plastics and bioplastics
- Technologies respecting our planet & resources





5 YEAR
WARRANTY



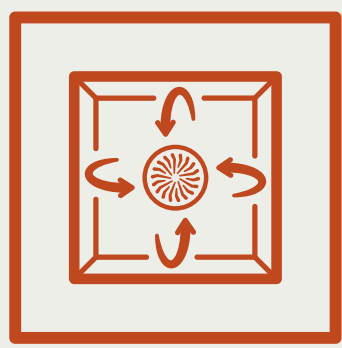
GRUNDIG

It starts at home

*covers parts and labour



The best recipe
for a tasteful life.



HotAero Pro Technology

HotAero Pro Technology circulates hot air evenly inside the oven. So, no burnt corners or uncooked centers. We believe that no matter the shape, color or texture, all food deserves to be delicious and respected. Discover how you can produce less waste with even cooking, even grilling and precise cooking with the new Grundig *HotAero Pro Technology*.



Perfect
Hot Air Circulation

GEBM 19300 BC



60cm HotAero Pro Multifunction Built-In Oven

Specifications

- Multifunction Oven
- A+ Energy Rating
- 72L Oven Capacity
- LED Display – Touch & Knob Control
- Catalytic Side & Back Walls
- Telescopic Rails

Functions

- HotAero Pro
- Conventional Cooking
- Fan Heating
- Eco Fan Heating
- Electric Grill
- Defrost
- 3D Cooking
- Pizza Cooking
- Simple Steam Cleaning

Accessories

- Deep Tray
- Standard Tray
- Wire Rack

Product Dimensions

(H x W x D)

- 595 x 594 x 567 mm

Colour Options

- Anti-Finger Inox

GEBTM 19400 DXPS



60cm Divide & Cook Pyrolytic Built-In Oven

Specifications

- A+ Energy Rating
- 80L Oven Capacity
- LED Display
- Touch & Knob Control
- Dual Fan
- Telescopic Rails

Functions

- HotAero Pro
- Divide & Cook
- Pyrolytic Cleaning
- Warm Keeping
- Bottom Heating
- Fan Assisted Cooking
- Simple Steam Cleaning
- 3D Cooking
- Defrost
- Fast Preheating
- Grill with Fan
- Eco Fan Heating
- Pizza Cooking

Accessories

- Standard Tray
- Wire Rack

Product Dimensions

(H x W x D)

- 595 x 594 x 567 mm

Colour Options

- Dark Anti-Finger Inox

GEBD 19401 BHI



60cm SmartAero Pro Steam Assisted Built-In Oven

Specifications

- A+ Energy Rating
- 72L Oven Capacity
- LED Display
- Touch & Knob Control
- Catalytic Back Walls
- Steam Assisted Cooking with Steam Generator
- Wi-Fi & BLE Connectivity (Homewhiz)
- Soft Open and Close Door
- Telescopic Rail

Accessories

- Deep Tray
- Standard Tray
- Wire Rack

Product Dimensions

(H x W x D)

- 595 x 594 x 567 mm

Colour Options

- Anti-Finger Inox

Functions

- SmartAero Pro
- Conventional Cooking
- Steam Assisted Cooking
- Fan Assisted Cooking
- 3D Cooking
- Warm Keeping
- Fan Heating + Eco Fan Heating
- Simple Steam Cleaning
- Electric Grill
- Grill with Fan
- Pizza Cooking

GEBM 19600 DXHI



60cm SmartAero Pro Built-In Oven

Specifications

- A+ Energy Rating
- 71L Oven Capacity
- TFT Display
- Touch & Knob Control
- Catalytic Back Walls
- Wi-Fi Connectivity (Homewhiz)
- Soft Open and Close Door
- Telescopic Rail

Accessories

- Pastry Tray
- Standard Tray
- Wire Rack

Product Dimensions

(H x W x D)

- 595 x 594 x 567 mm

Colour Options

- Dark Inox

Functions

- SmartAero Pro
- Conventional Cooking
- Bottom Heating
- Fan Assisted Cooking
- Simple Steam Cleaning
- 3D Cooking
- Warm Keeping
- Fan Heating + Eco Fan Heating
- Defrost
- Electric Grill
- Grill with Fan
- Pizza Pro Cooking

GBWMT 12300 XS



90cm Multifunction Built-In Oven

Specifications

- Multifunction Oven
- A Energy Rating
- 100L Oven Capacity
- LED Display – Touch Control
- Catalytic Side Walls
- Dual Fan
- Telescopic Rail

Accessories

- Standard Tray
- Turnspit

Product Dimensions (H x W x D)

- 595 x 896 x 565 mm

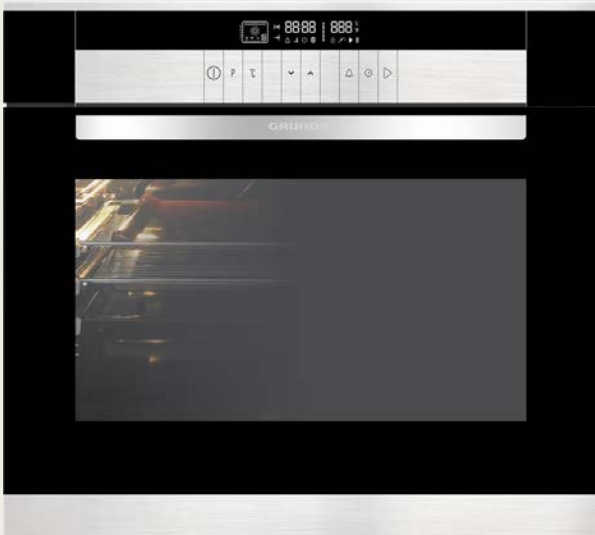
Functions

- Conventional Cooking
- Bottom Heating
- Fan Assisted Cooking
- Simple Steam Cleaning
- 3D Cooking
- Defrost
- Electric Grill
- Fan Heating

Colour Options

- Black

GEBM 35000 B



70cm Multifunction Built-In Oven

Specifications

- Multifunction Oven
- Built-In Oven
- A Energy Rating
- 80L Oven Capacity
- Touch Control Buttons
- Telescopic rails
- Cool Touch Door
- Soft Doormatic
- Telescopic rails

Accessories

- Deep tray
- Standard tray
- Meat probe

Product Dimensions (H x W x D)

- 670 x 730 x 630 mm

Functions

- Grill+fan
- Warm keeping
- Pizza Function
- Fan cooking
- Eco Fan Cooking
- Grill
- Bottom heater
- Conventional
- Conventional+fan
- 3D Cooking

Colour Options

- Black

GEDM 26000 B



70cm Multifunction Double Oven

Specifications

- A Energy Rating
- 80L Oven Capacity
- Top oven: Multifunction
- Bottom oven: Multifunction
- Meat Optimiser
- Soft close hinges
- Push in Push Out Knobs
- Black glass finish
- White LED display
- Glass control panel
- Telescopic rails
- Cool touch door (Triple glass door)
- Removable glass inner door

Accessories

- Wire shelves
- Baking tray
- Roast pan
- Meat probe

Product Dimensions

(H x W x D)

- 1100 x 730 x 630 mm

Colour Options

- Black

Functions

- Grill+fan
- Warm keeping
- Pizza Function
- Fan cooking
- Eco Fan Cooking
- Grill, Bottom heater
- Conventional
- Conventional+fan
- 3D Cooking

GEKW 19400 DX



60cm Compact Built-In/Microwave Oven

Specifications

- A Energy Rating
- 48L Oven Capacity
- LED Display
- Touch & Knob Control

Accessories

- Wire Rack
- Standard Tray

Product Dimensions

(H x W x D)

- 455 x 594 x 567 mm

Colour Options

- Dark Inox

Functions

- Microwave Assisted Cooking
- Conventional Cooking
- Bottom Heating
- 3D Cooking
- Fan Heating
- Eco Fan Heating
- Electric Grill
- Grill with Fan
- Warm Keeping
- Pizza Cooking

GWS 2152 B



60cm Warmer Drawer

Specifications

- 22 L cavity volume
- 4 levels between 40°C and 80°C
- Telescopic drawer for easy access
- Easy-to-clean glass heating plate
- Cross flow blower with heater
- Stainless steel cavity

Functions

- Defrost
- Dough raising
- Pre-heating of food
- Warm keeping
- Pre-warming crockery & utensils

Product Dimensions

(H x W x D)

- 140 x 594 x 554 mm

Colour Options

- Black
- Inox



SmartAero Pro Technology

No matter the cook, chef quality results *SmartAero Pro* Oven provides chef quality results no matter what you cook. Our new smart oven automatically adjusts the speed of the fan according to your meal choices, ensuring your cooking and baking is perfect and your meals stay delicious.



GIGG 9235150 X



90cm Gas on Glass Hob

Specifications

- Front-mounted controls
- 4 gas burners and 1 wok burner
- Electric Ignition
- Cast Iron Pan Supports
- Wok Burner: 3.3 kW
- Right Burners: 1 kW, 2kW (front, rear)
- Left Burners: 2 kW, 2.9 kW (front, rear)
- Black Glass

Functions

- Flame failure gas cut-out device
- Precise Flame
- Easy Cleaning Glass

Product Dimensions

(H x W x D)

- 100 x 890 x 510 mm

Colour Options

- Black Glass/Inox Gas Hob

GIGL 6234250



60cm Gas on Glass Hob

Specifications

- Electric Ignition
- Continuous Cast Iron Pan Supports
- Wok Burner: 5 kW
- Front Burner: 1 kW
- Rear Burners: 1.75 kW
- Black Glass

Functions

- Flame Failure Safety Device
- Easy Clean Coating
- Precise Flame

Product Dimensions

(H x W x D)

- 46 x 585 x 524 mm

OCD K 752 DWKS



75cm Gas on Glass Hob

Specifications

- Electric Ignition
- Single Square Cast Iron Pan Supports
- Wok Burner: 5 kW
- Right Burners: 1.75 Kw
- Left Burners: 1 kW, 2.9 kW (front, rear)
- Black Glass

Functions

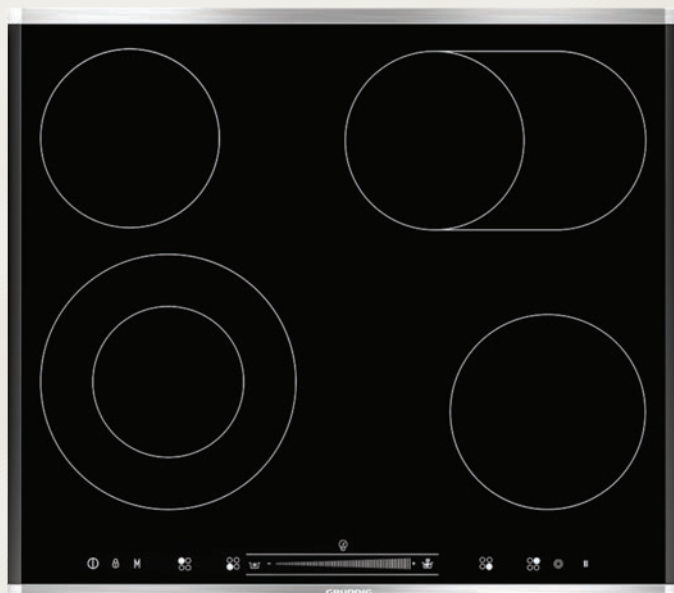
- Flame Failure Safety Device
- Easy Clean Coating
- Precise Flame

Product Dimensions

(H x W x D)

- 51 x 750 x 524 mm

GIEV 624430 X



60cm Vitroceramic Hob

Specifications

- 19 cooking levels per zone
- 4 Vitroceramic zones
- Front and back stainless steel frame with facette edges
- Separate touchpads
- Booster, fast to-the-degree heating
- Flush-mounted installation
- Precise heat adjustment
- On off indicator

Functions

- Residual heat indicators
- Anti over-flow system
- Automatic stop system
- Child lock
- Timer and buzzer

Product Dimensions

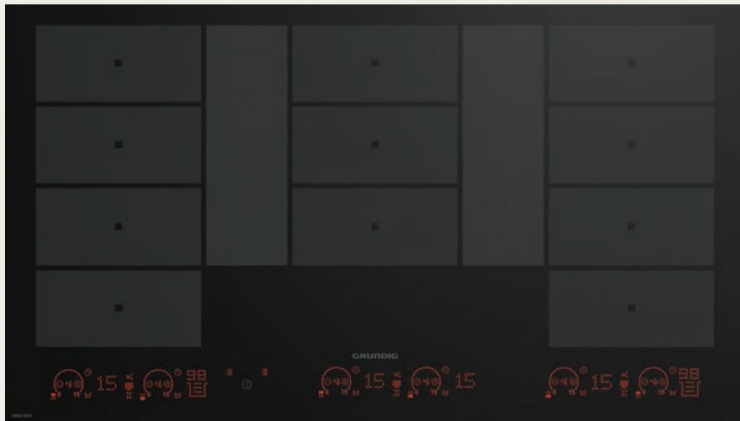
(H x W x D)

- 60 x 587 x 512 mm

Colour Options

- Black

GIEI 938980 I



90cm Flexi Induction Hob

Specifications

- 11 zones with 3 flexizones
- 2 extended zone
- 15 Cooking levels
- Bridge Function
- Digital Display on Hob
- Residual Heat Indicators
- Display Lock
- Automatic pan recognition
- Automatic shut-off
- On-off Indicator light
- Stop & Go

Product Dimensions

(H x W x D)

- 65 x 900 x 516 mm

Colour Options

- Black

GDKP2464BBSC



60cm T-Shaped Hood

Specifications

- A Energy Rating
- Electronic Touch Control
- 3 + 1 Intensive Power Level
- Illumination with 2x3W LED Lights
- 2 Grease Filters
- 71 dBA Maximum Noise Level
- 710 m³/h Maximum Ventilation Capacity
- Temperature Sensors

Functions

- Air Cleaning

Product Dimensions

(H x W x D)

- 1025 x 598 x 505 mm

Colour Options

- Black Glass and Inox

GDKP5464BBSC



90cm T-Shaped Hood

Specifications

- A Energy Rating
- Electronic Touch Control
- 3 + 1 Intensive Power Level
- Illumination with 2x3W LED Lights
- 3 Grease Filters
- 72 dBA Maximum Noise Level
- 715 m³/h Maximum Ventilation Capacity
- Temperature Sensors

Functions

- Air Cleaning

Product Dimensions

(H x W x D)

- 1025 x 898 x 505 mm

Colour Options

- Black Glass and Inox

GDSP5470BSCH



90cm Inclined Hood

Specifications

- A+ Energy Rating
- Electronic Touch Control
- 3 Power Levels
- Illumination with 2x3W LED Lights
- 2 Grease Filters
- 68 dBA Maximum Noise Level
- 763 m³/h Maximum Ventilation Capacity
- Wi-Fi and BLE Connectivity
- Odour Sensor

Functions

- Air Cleaning

Product Dimensions

(H x W x D)

- 1180 x 896 x 466 mm

Colour Options

- Black Glass





Grundig Full Fresh+ Taste best, *keep fresh*

You can rely on our innovative *FullFresh+* crisper drawers to actively combat food wastage and keep your food fresher for longer with optimum humidity levels and improved airflow. This technology allows you to protect what keeps you healthy from the comfort of your own home. When it comes to maintaining a happy and healthy fridge, things have never been simpler or more powerful.



InverterEcoCompressor

GRUNDIG



GQN1232X



84cm Inox French Door Eco Fridge with Water Dispenser

Specifications

- Energy Rating: A++
- Frost Free
- FullFresh+
- SuperFresh Compartment
- Net Capacity:
Fridge Capacity: 378 L
Freezer Capacity: 152 L
- Inverter Compressor (10 year warranty)
- Display with Touch Control
- Automatic Water Dispenser (Plumbed)
- Automatic Ice Maker
- LED Illumination
- Anti-bacterial Odour Filter

Added Features

- FullFresh+
- Duo-Cooling
- Ion Fresh
- Inner Illumination
- Full Fresh Crisper
- Dairy Compartment

Product Dimensions (H x W x D)

- 1825 x 840 x 745 mm

Colour Options

- Pearl Steel

GSN30311FXBR



91cm Side By Side Fridge with Auto Ice/Water Dispenser

Specifications

- Energy Rating: A+
- Frost Free
- Net Capacity:
Fridge: 368L
Freezer: 157L
- Inverter Compressor (10 year warranty)
- Automatic Water Dispenser
- Display with Touch Control
- Automatic Ice Machine
- Door Open Alarm
- Child Lock
- Holiday Mode

Added Features

- Duo-Cooling
- LED Illumination
- VitaminZone
- Quick Cool
- Quick Freeze

Product Dimensions (H x W x D)

- 1790 x 910 x 705 mm

Colour Options

- Pearl Steel

GKPN 46820 XP



60cm Combi Fridge / Freezer

Specifications

- Energy Rating: A+
- AeroFresh
- Frost Free
- VitaminZone
- Net Capacity:
Fridge: 210L
Freezer: 106L
- Display with Touch Control
- Quick Freeze
- Quick Cool
- LED Illumination
- Bottle Holder – Foldable
- Door Open Alarm
- Child Lock
- Holiday Mode

Product Dimensions

(H x W x D)

- 1865 x 595 x 663 mm

Colour Options

- Pearl Steel

GLPN 66820 X



60cm Upright Fridge

Specifications

- Energy Rating: A++
- AeroFresh
- Frost Free
- Net Capacity: 365L
- VitaminZone
- Electronic Display On Front Top Trim
- Dairy Compartment
- Door Open Alarm
- Reversible Door
- Anti-bacterial Odour Filter
- Holiday Mode
- LED Illumination
- Bottle Holder - Foldable

Product Dimensions

(H x W x D)

- 1860 x 597 x 709 mm

Colour Options

- Pearl Steel

GFPN 66820 X



60cm Upright Freezer

Specifications

- Energy Rating: A++
- Frost Free
- Net Capacity: 286L
- Electronic Display On Front Top Trim
- Door Open Alarm
- Reversible Door
- Anti-bacterial Odour Filter
- Eco Mode
- Quick Freeze
- Inverter Compressor

Product Dimensions

(H x W x D) t

- 1865 x 597 x 709 mm

Colour Options

- Pearl Steel

GSMI25730FN



54cm Integrated Larder

Specifications

- Energy Rating: A+
- Static
- Net Capacity: 309L
- Electronic Display On Front Top Trim
- Wine Rack
- Door Open Alarm
- Reversible Door
- Dairy Compartment
- Quick Cool
- VitaminZone
- Holiday Mode

Product Dimensions

(H x W x D)

- 1775 x 540 x 545 mm

Colour Options

- White

GFNI12411



54cm Integrated Freezer

Specifications

- Energy Rating: A+
- Frost Free
- Net Capacity: 220L
- Electronic Display On Front Top Trim
- Door Open Alarm
- Reversible Door
- Quick Freeze

Product Dimensions

(H x W x D)

- 1775 x 540 x 545mm

Colour Options

- White

GKNI 15740N



56cm Integrated Combi

Specifications

- Energy Rating: A++
- Frost Free
- Net Capacity:
Fridge: 172L
Freezer: 65L
- Electronic Display On Front Top Trim
- Inverter Compressor
- Door Open Alarm
- Reversible Door
- Dairy Compartment
- Quick Cool
- Quick Freeze
- LED Illumination
- Holiday Mode

Product Dimensions

(H x W x D)

- 1777 x 556 x 545 mm

Colour Options

- White



We care for you *and your clothes.*

Our recycled PET Tub washing machines' *Inverter Eco Motor* not only provides a quieter washing cycle, but it is also more energy efficient than standard motors. No compromises, that's essential.





Washing machines.

Our new Grundig Recycled PET Drum for washing machines is a plastic drum made of recycled plastic bottles. It's designed to save energy by reducing the production of harmful plastic bottles. As each drum is made of 60 of these recycled PET plastic bottles. It's estimated that within the first phase of production, 6.6 million bottles annually will be recycled to produce this ground-breaking technology. The result is a total energy saving of 5.7 million kWh per year.

Washer dryers.

New IronTouch solution will optimize water level, temperature, spinning cycle and steam. So the clothes will get out less wrinkled from washing machine, in this way physical effort and time spent for ironing will be reduced.

The HygieneTherapy programme warms clothes by blowing hot air and disinfects 2kg clothes within 58 minutes.



Tumble dryers.

Grundig hybrid tumble dryers with Express Dry Technology, are capable of drying 5kg of washing in only 1 hour, thanks to both a conventional heater and Heat Pump Technology working in unison. The combination of these two technologies also allows for complete flexibility in your drying routine, so you can switch between fast and energy saver programs. With a rapid dry in a shorter program duration, Express Dry gives you a compact, eco-friendly dry.



GW7P682210W

Prologue 9kg Front Loader



Specifications

- Energy Rating: A+++ (-10%) Energy
- 9kg Capacity
- 1200 rpm
- 15 Programs
- X-Large Front Door
- Inverter EcoMotor (10 year warranty)
- White LED Digital Display

Product Dimensions (H x W x D)

- 840 x 600 x 580 mm

Colour Options

- Onyx Grey

Features

- PET Tub
- BLE Connectivity (Homewhiz)
- Prewash
- SteamAssist
- GentleWave
- Self Cleaning Detergent Drawer

GWP810616MW

Prologue 10kg Front Loader



Specifications

- Energy Rating: A+++ (-10%) Energy
- 10kg Capacity
- 1600 rpm
- 14 Programs
- X-Large Front Door
- Interior Drum Light
- Inverter EcoMotor (10 year warranty)
- White LED Digital Display

Product Dimensions (H x W x D)

- 840 x 600 x 580 mm

Colour Options

- Onyx Grey

Features

- ProDose
- WaterCare
- Autoprogram
- Autorinse
- PET Tub
- Multi-Sense Technology
- WiFi & BLE Connectivity (Homewhiz)
- Prewash

GWD 61400



Prologue 10/6kg Washer Dryer

Specifications

- Energy Rating: A
- 10kg Washing Capacity
- 6kg Drying Capacity
- 14 Programs
- X-Large Front Door
- Inverter EcoMotor (10 year warranty)
- White LED Digital Display

Product Dimensions

- (H x W x D)**
- 840 x 600 x 600 mm

Colour Options

- Onyx Grey

Features

- HygieneRefresh
- IronTouch
- Tornado
- WaterCare
- GentleWave
- PET Tub
- WiFi & BLE Connectivity (Homewhiz)

GT77823W



Prologue 8kg Tumble Dryer

Specifications

- Energy Rating: A++
- 8kg Capacity
- Heat Pump
- 15 Programs
- X-Large Front Door
- White LED Digital Display
- Interior Drum Light
- Noise Level: 64 dBA

Product Dimensions

- (H x W x D)**
- 846 x 598 x 607 mm

Colour Options

- Onyx Grey

Features

- PET Chasis
- Auto-Anti Creasing
- WaterTank Full Indicator
- GentleWave
- WiFi Connectivity (Homewhiz)

GT77023W



Prologue 10kg Tumble Dryer

Specifications

- Energy Rating: A++
- 10kg Capacity
- Heat Pump
- 14 Programs
- X-Large Front Door
- Inverter EcoMotor (10 year warranty)
- White LED Digital Display
- Interior Drum Light
- Noise Level: 64 dBA

Features

- PET Chasis
- Auto-Anti Creasing
- GentleWave
- WiFi Connectivity (Homewhiz)
- ExpressDry
- Spray Steam

Product Dimensions

(H x W x D)

- 846 x 598 x 607 mm

Colour Options

- Onyx Grey

Glowing dishes, *every time.*

Our Doormatic Dishwashers utilise natural airflow in an intelligent and energy-efficient way to achieve glowing dishes, sparkling crockery and crystal clear glassware. At the end of each dishwasher cycle, Doormatic technology opens the door automatically, releasing moisture and allowing cool air to flow naturally through your dishes, drying the load faster and more effectively.

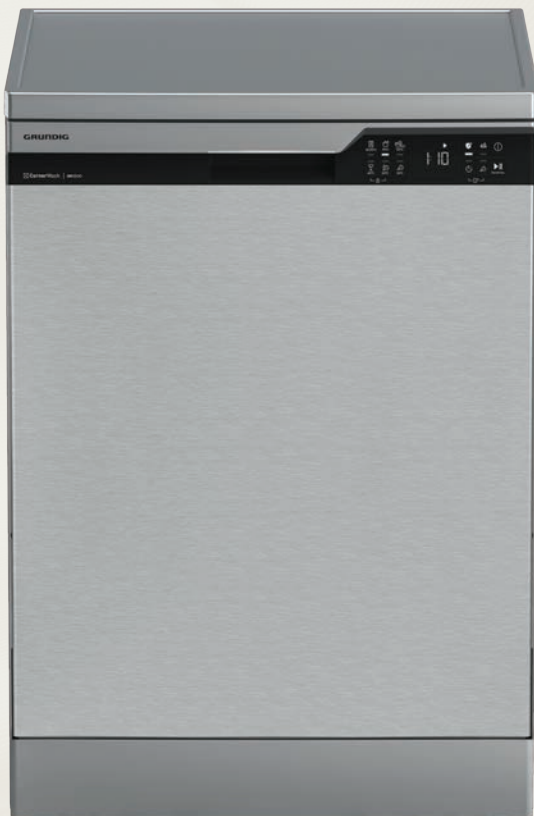


HygieneCare

When cleanliness is paramount, our advanced feature steps up to the challenge. By boosting the washing and rinsing temperatures and extending their durations, it ensures a thorough clean. Plus, an extra rinsing cycle guarantees your dishes come out sparkling and more hygienic than ever!



GNF 54820



Prologue 15ps Freestanding Dishwasher

Specifications

- Energy Rating: A+++
- 15 Place Settings
- 7L Water Consumption
- Inverter EcoMotor
(10 year warranty)
- Noise Level: 44dBA
- 6 Programs
- Front Control Panel

Features

- HygieneCare
- FastWash
- Doormatic
- Sliding Cutlery Basket and Tray
- 3-Position Adjustable Upper Basket

Product Dimensions

(H x W x D)

- 850 x 598 x 600 mm

Colour Options

- Pearl Inox

GNV4P5A0WC



Prologue 15ps Dishwasher (Intergrated)

Specifications

- Energy Rating: A++
- 15 Place Settings
- Fully Intergrated
- 9.5L Water Consumption
- Noise Level: 44dBA
- 8 Programs
- Top Control Panel

Functions

- HygieneCare
- SteamShine
- TrayWash
- Sliding Cutlery Basket and Tray
- 3-Position Adjustable Upper Basket

Product Dimensions

(H x W x D)

- 818 x 598 x 550 mm

Colour Options

- White







GRUNDIG

GRUNDIG

GRUNDIG

GRUNDIG

GRUNDIG

It starts at home

Grundig Customer Service No: 086 147 8634



grundig.com



facebook.com/grundig.za



[grundig_za](https://instagram.com/grundig_za)